



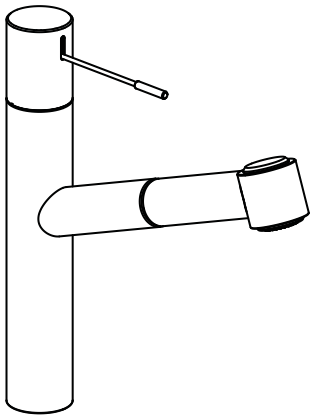
Montage- und Serviceanleitung  
 Instructions de montage et d'entretien  
 Istruzioni di montaggio e di assistenza  
 Instrucciones de montaje y servicio  
 Installation and service instructions

**802331**

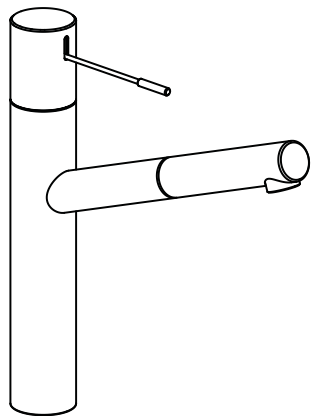
11/10

Küchenmischer  
 Mitigeur d'évier  
 Miscelatori da cucina  
 Mezclador de cocina  
 kitchen faucet

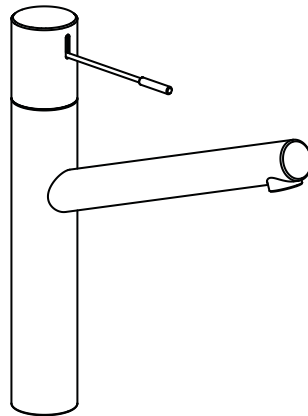
**KWC ONO**



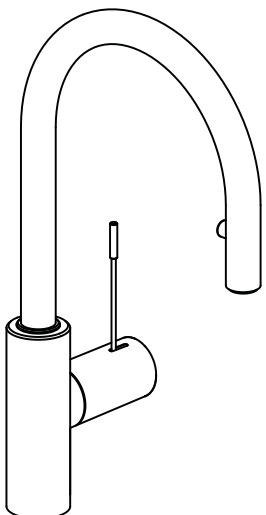
10.151.033.000  
 10.151.033.700



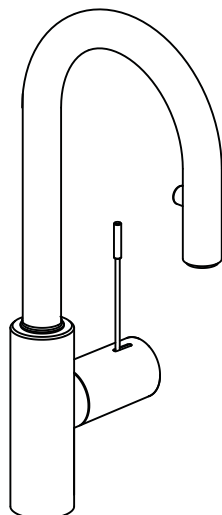
10.151.113.000  
 10.151.113.700



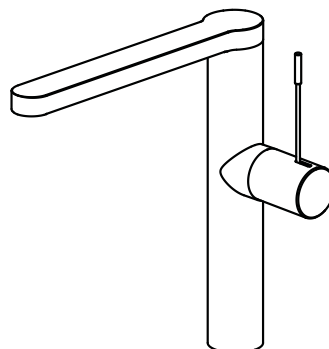
10.151.023.000  
 10.151.023.700



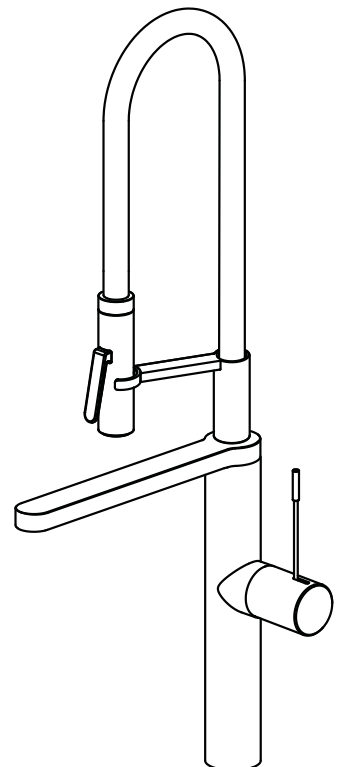
10.151.102.000  
 10.151.102.700



10.151.991.000  
 10.151.991.700



10.151.413.000  
 10.151.413.700



10.151.423.000  
 10.151.423.700

Idealer Betriebsdruck : 3 bar  
 Max. Betriebsdruck : 5 bar  
 Min. Betriebsdruck : 1 bar  
 Druckgleichheit empfehlenswert.  
 Ideale Wassertemperatur : 60 °C  
 Max. Wassertemperatur : 80 °C



Achtung:  
 Vor Montage die Leitungen gründlich durchspülen!

Weitere Informationen finden Sie in unseren detaillierten Verkaufsunterlagen.

Pressione di servizio ideale : 3 bar  
 Pressione di servizio mass. : 5 bar  
 Pressione di servizio min. : 1 bar  
 Si raccomanda pressioni uguali.  
 Temperatura acqua calda ideale : 60°C  
 Temperatura acqua calda mass. : 80°C



Attenzione:  
 Risciacquare bene le tubazioni prima del montaggio!

Ulteriori informazioni le troverete nelle nostre dettagliate documentazioni.

Pression de service idéale : 3 bar  
 Pression de service max. : 5 bar  
 Pression de service min. : 1 bar  
 Egalité de pression recommandée.  
 Température idéale de l'eau : 60°C  
 Température max. de l'eau : 80°C



Attention:  
 Rincer à fond la tuyauterie avant le montage!

Pour informations supplémentaires voir nos documentations de vente détaillées.

Presión ideal de servicio : 3 bar  
 Presión máxima de servicio : 5 bar  
 Presión mínima de servicio : 1 bar  
 Se recomienda la igualdad de las presiones.  
 Temperatura ideal del agua : 60 °C  
 Temperatura máxima del agua : 80 °C



Atención:  
 Enjuagar escrupulosamente las tuberías antes del montaje!

Información más detallada en nuestra documentación de ventas.

Ideal operating pressure : 3 bar (45 PSI)  
 Max. operating pressure : 5 bar (70 PSI)  
 Min. operating pressure : 1 bar (14.5 PSI)  
 Equal pressures are recommended.  
 Ideal water temperature : 60 °C (140°F)  
 Max. water temperature : 80 °C (180°F)

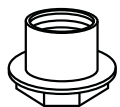
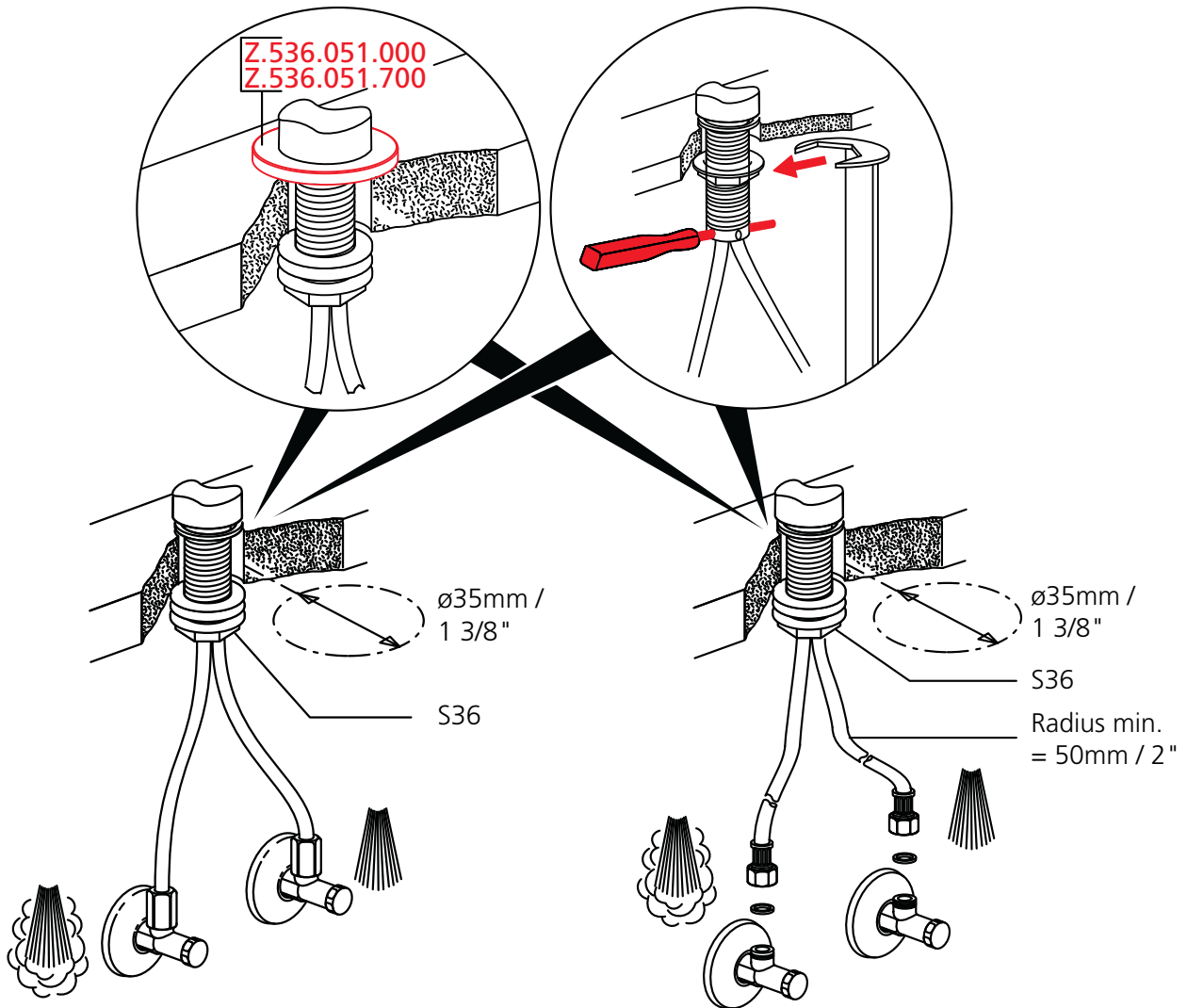


Attention:  
 Flush pipes thoroughly before installation!

For further information refer to our detailed sales literature.



- D Schäden, die infolge unsachgemässer Behandlung, natürlicher Abnutzung oder zu grosser Inanspruchnahme entstanden sind, sind von unseren Garantieleistungen ausgeschlossen!
- F Ces dommages survenus en raison d'un traitement inadéquat, des signes d'usure traitement inadéquat, naturels ou du grand utilisation, sont exclus de notre garantie.
- I Danni ai rubinetti, conseguenti da un trattamento non appropriato, sono esclusi dalla nostra garanzia!
- Sp Daños, debidos a un tratamiento inadecuado, son excluidos de la nuestra garantía.
- E Damages on the faucet resulting from incorrect handling are excluded from the manufacturers warranty!

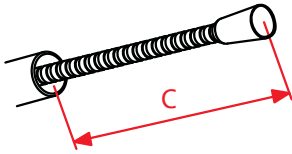


Z.503.315

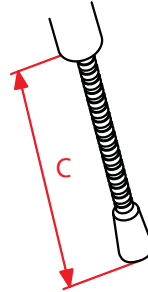
Verlängerungsmutter L= 40mm  
 Ecrou allongé L= 40mm  
 Dado prolongato L= 40mm  
 Tuerca de prolongación L= 40mm  
 Extension nut L= 40mm / 1 1/2 "

10.151.003.  
 10.151.033.  
 10.151.113.

10.151.102.  
 10.151.991.



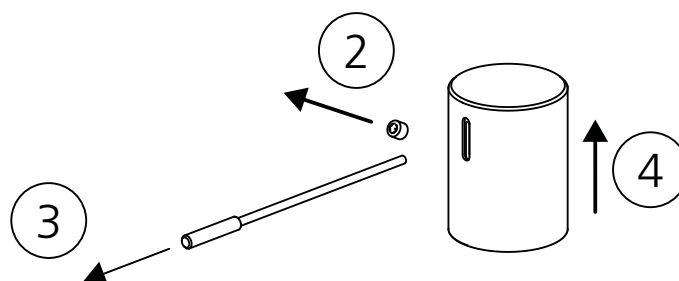
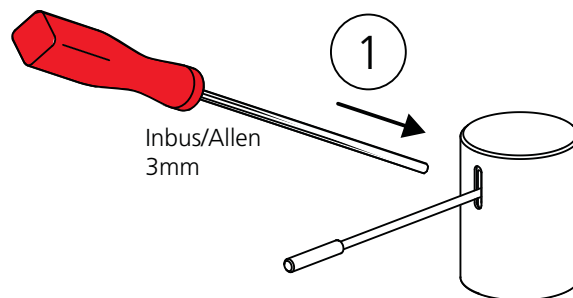
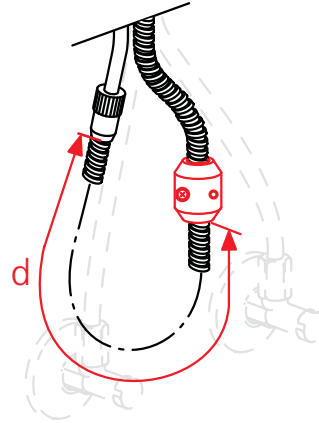
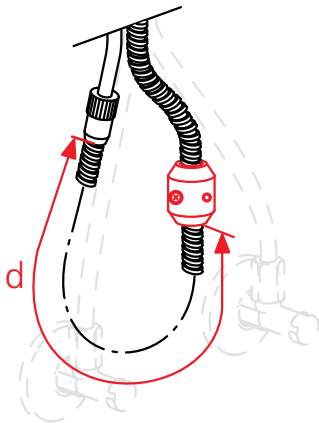
$c = 600 \text{ mm} / 23 \frac{5}{8}''$



$c = 700 \text{ mm} / 27 \frac{9}{16}''$

$d = 500 \text{ mm} / 19 \frac{11}{16}''$

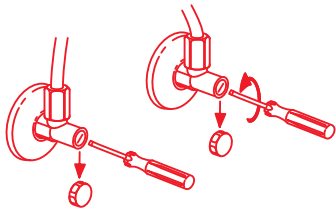
$d = 350 \text{ mm} / 13 \frac{13}{16}''$



Demontage Hebel  
 Demontage levier  
 Smontaggio leva  
 Desmontaje palanca  
 Disassembling lever

Inbetriebsetzung  
Mise en service  
Messa in funzione  
Puesta en servicio  
Initial operation

1



Kalt- und Warmwasser öffnen.

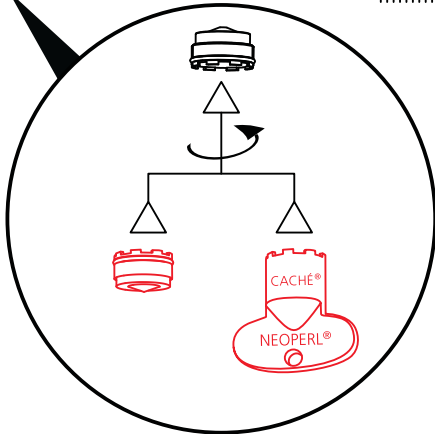
Ouvrir eau froide et chaude.

Aprire acqua fredda e calda.

Abrir la salida de agua fría y caliente.

Open cold and hot water.

2



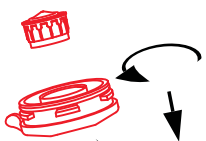
3

|||||| D spülen  
|||||| F rincer  
|||||| I sciacquate  
|||||| Sp enjuagar  
|||||| E flush

4



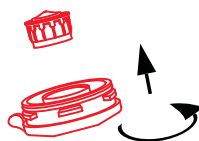
2

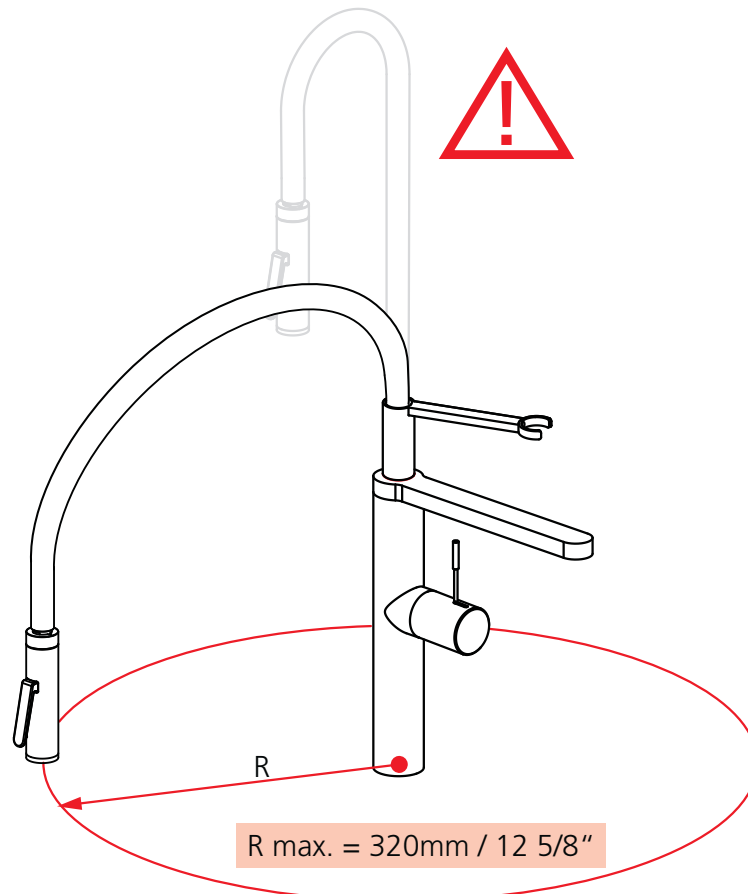
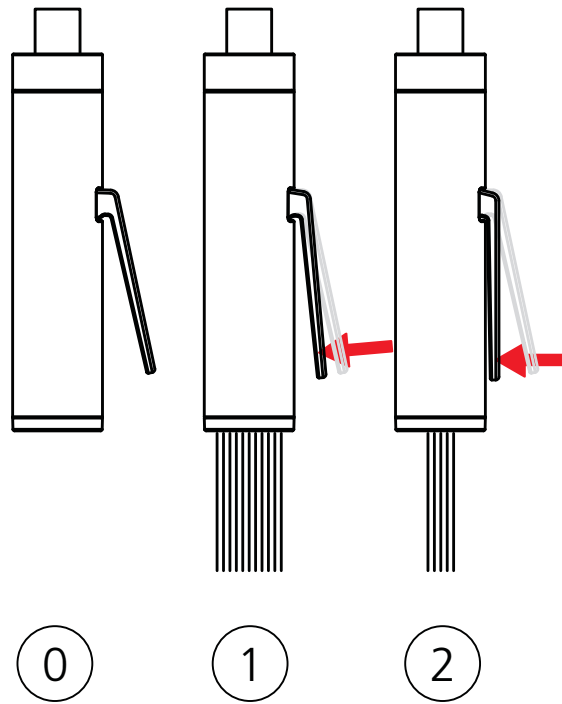


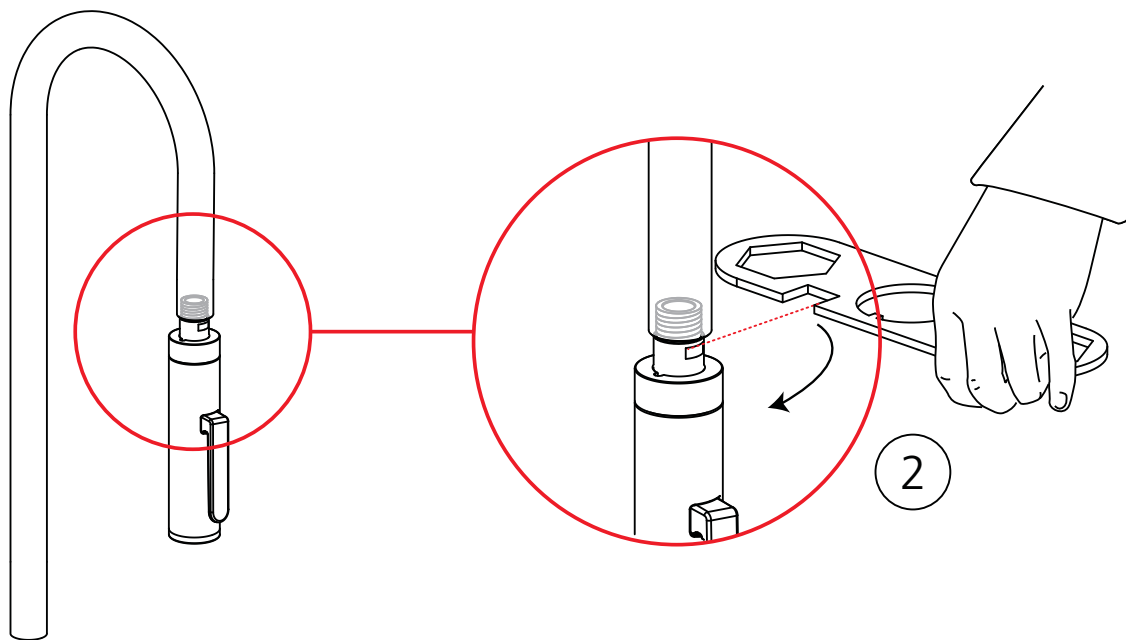
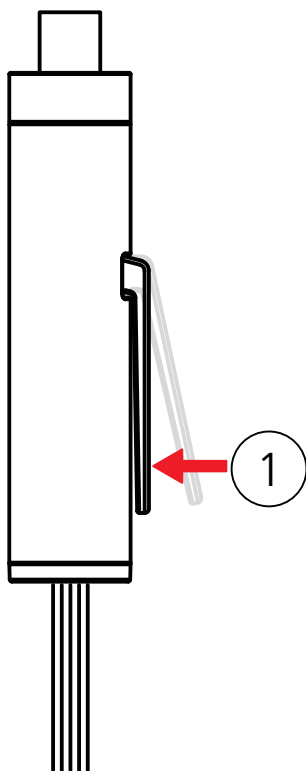
3

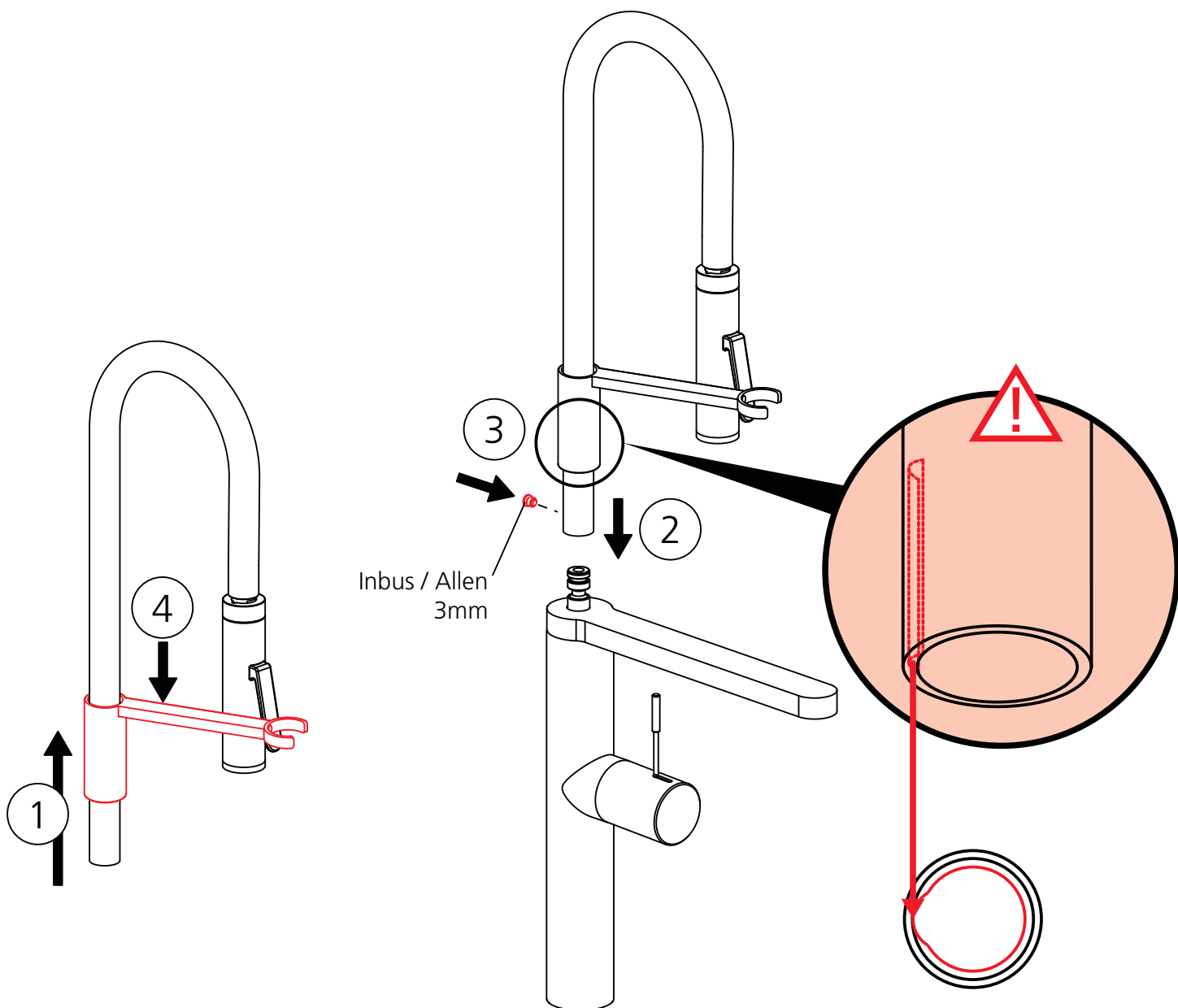
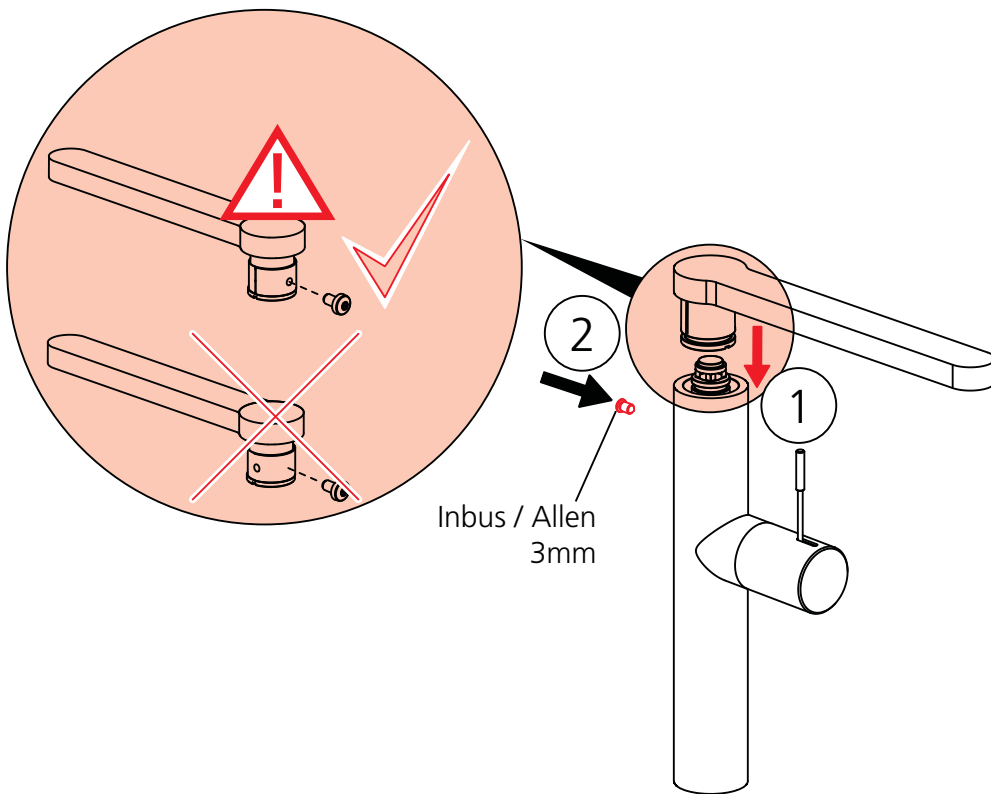
|||||| D spülen  
|||||| F rincer  
|||||| I sciacquate  
|||||| Sp enjuagar  
|||||| E flush

4



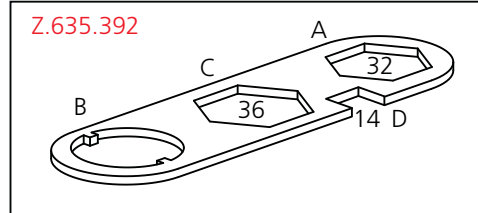
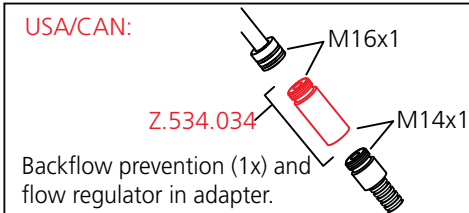
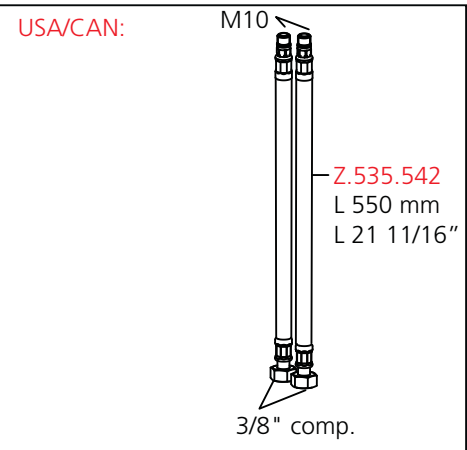
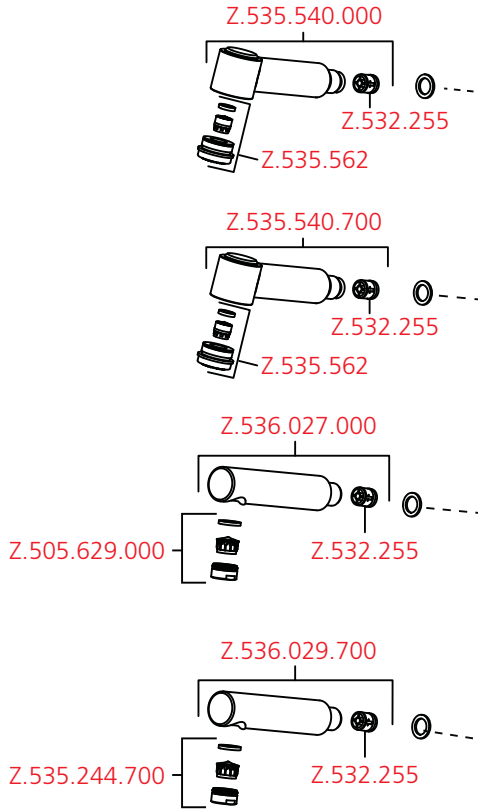
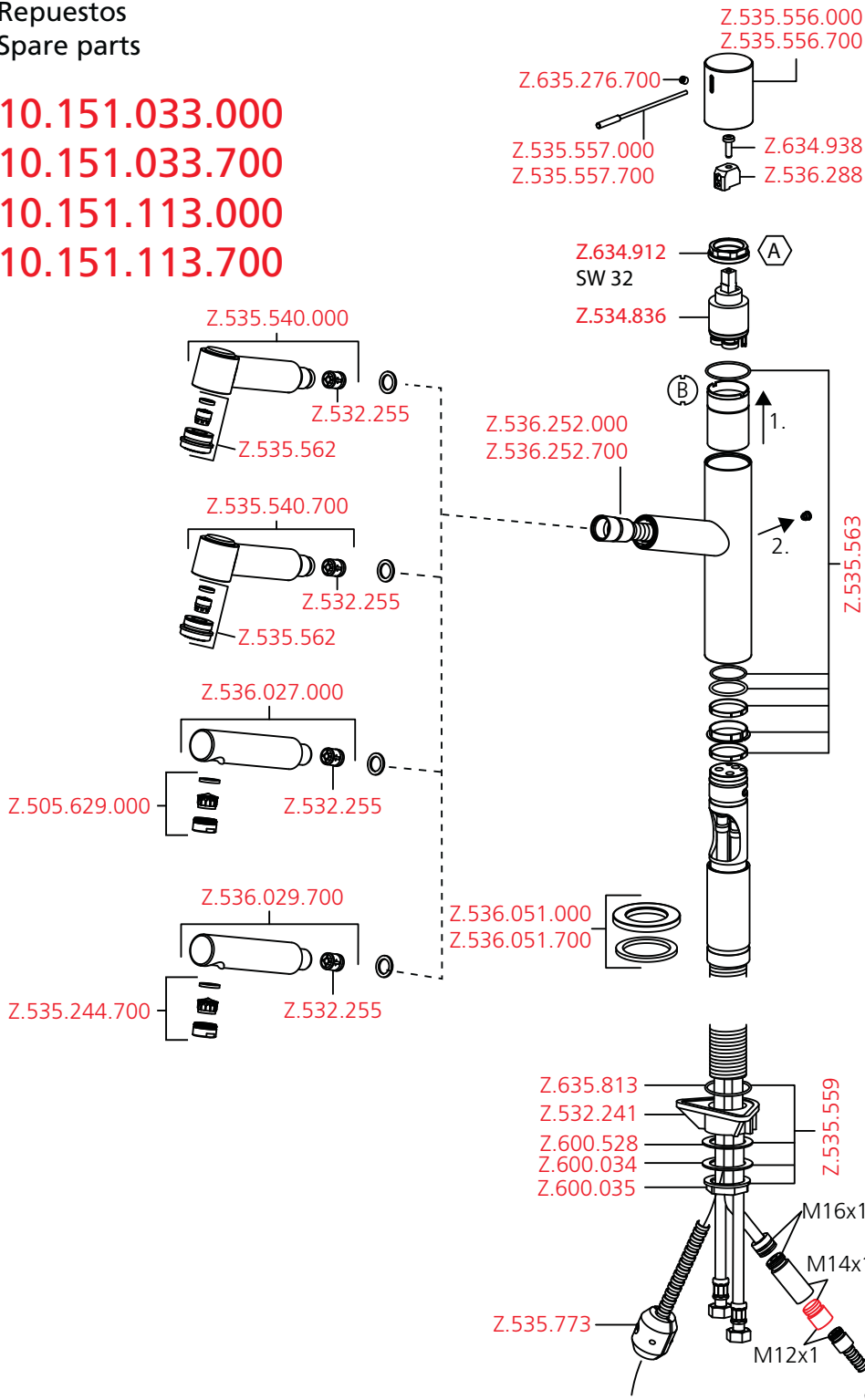


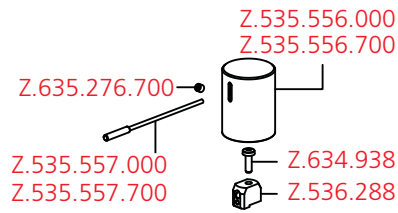




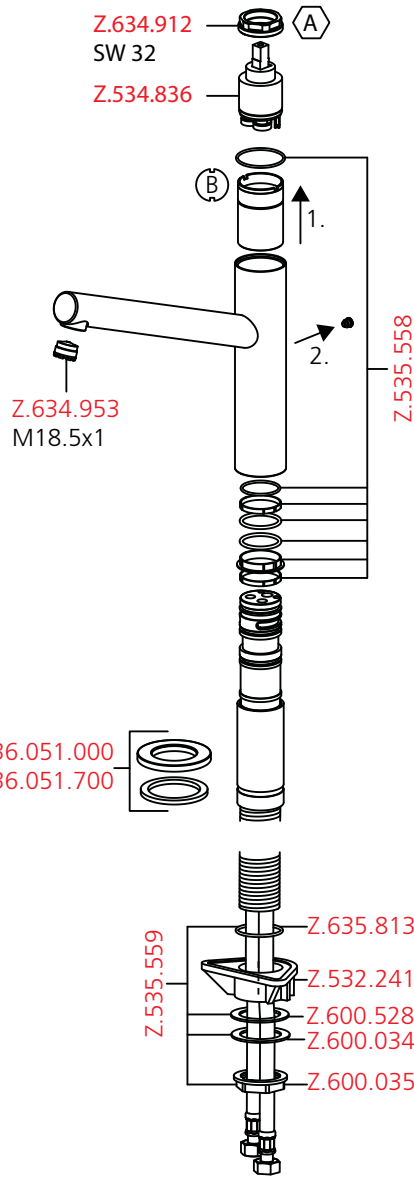
Ersatzteile  
 Pièces de rechange  
 Pezzi di ricambio  
 Repuestos  
 Spare parts

10.151.033.000  
 10.151.033.700  
 10.151.113.000  
 10.151.113.700

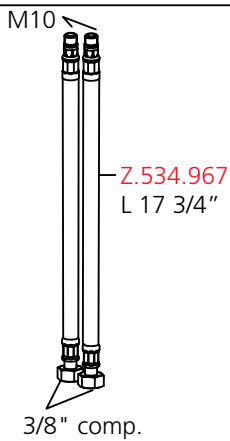




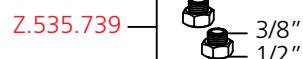
10.151.023.000  
 10.151.023.700



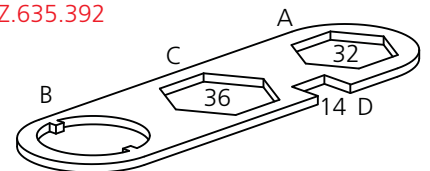
USA/CAN:



Adapter 3/8" x 1/2"

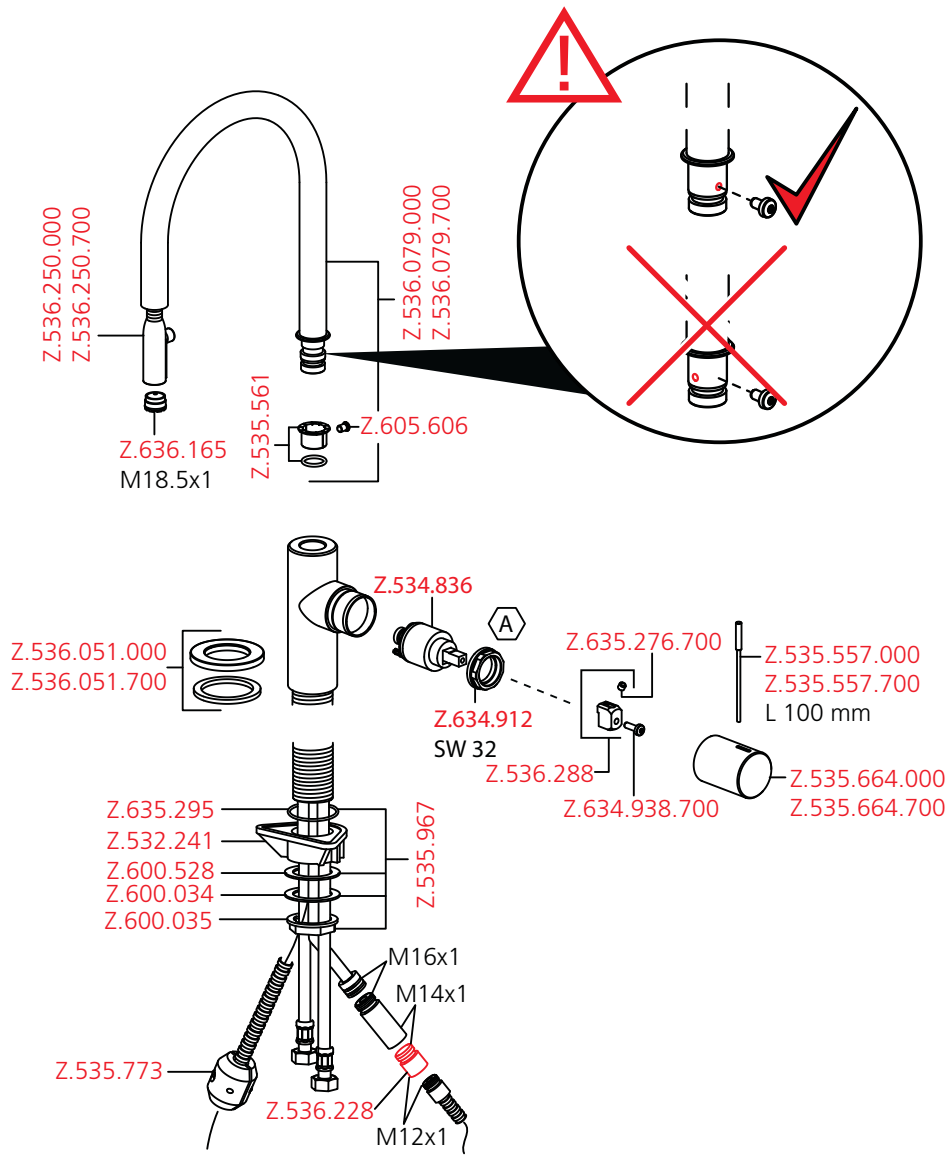


Z.635.392



Ersatzteile  
 Pièces de rechange  
 Pezzi di ricambio  
 Repuestos  
 Spare parts

10.151.102.000  
 10.151.102.700



optional

Z.535.995.000  
L 70 mm

optional

Z.535.995.700  
L 70 mm

USA/CAN:

Z.535.505

M16x1

M14x1

Backflow prevention (2x) and flow regulator in adapter.

USA/CAN:

M10

Z.534.967  
L 17 3/4"

3/8" comp.

Z.635.392

A

B

C

D

32

36

14

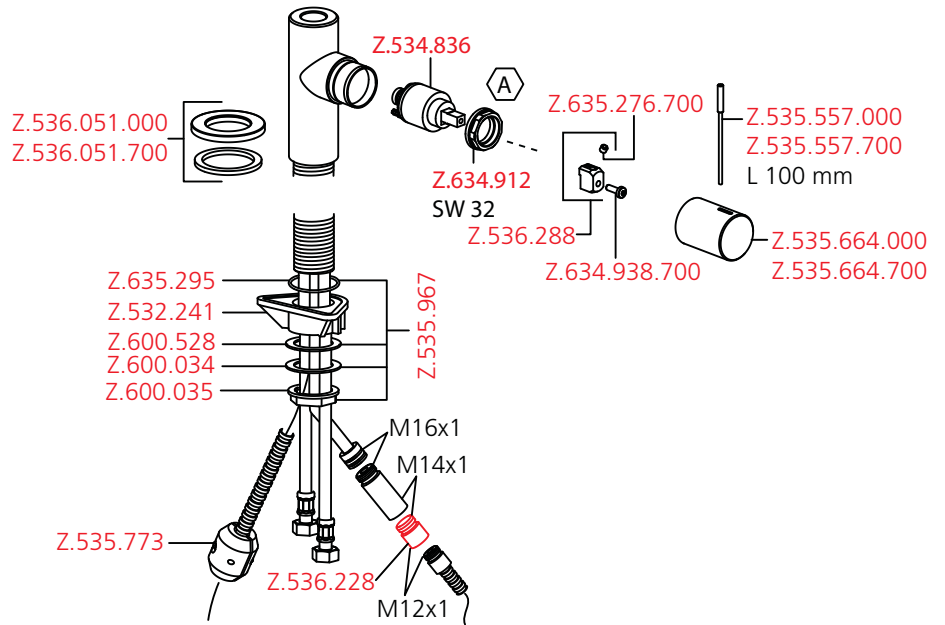
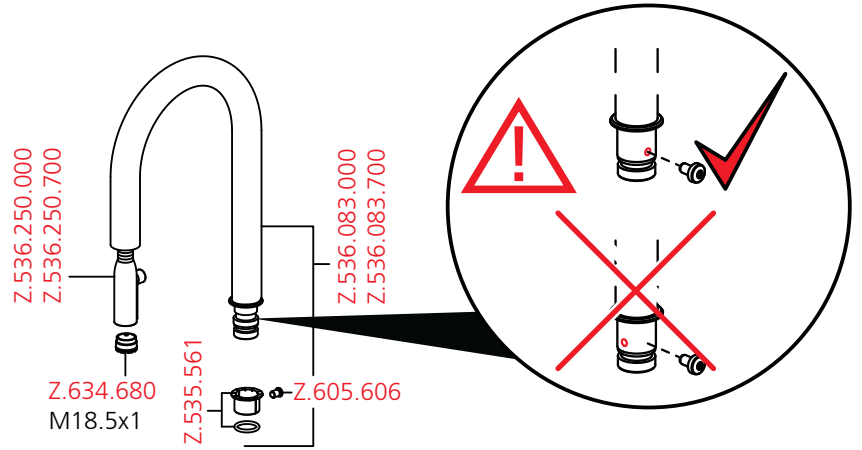
M18.5x1

Z.634.729

CACHE®

NEOPERL®

10.151.991.000  
10.151.991.700



optional

Z.535.995.000  
L 70 mm

optional

Z.535.995.700  
L 70 mm

USA/CAN:

Z.535.505  
M16x1  
M14x1

Backflow prevention (2x) and flow regulator in adapter.

USA/CAN:

M10  
Z.534.967  
L 17 3/4"  
3/8" comp.

M18.5x1  
Z.634.729

CACHE®  
NEOPERL®

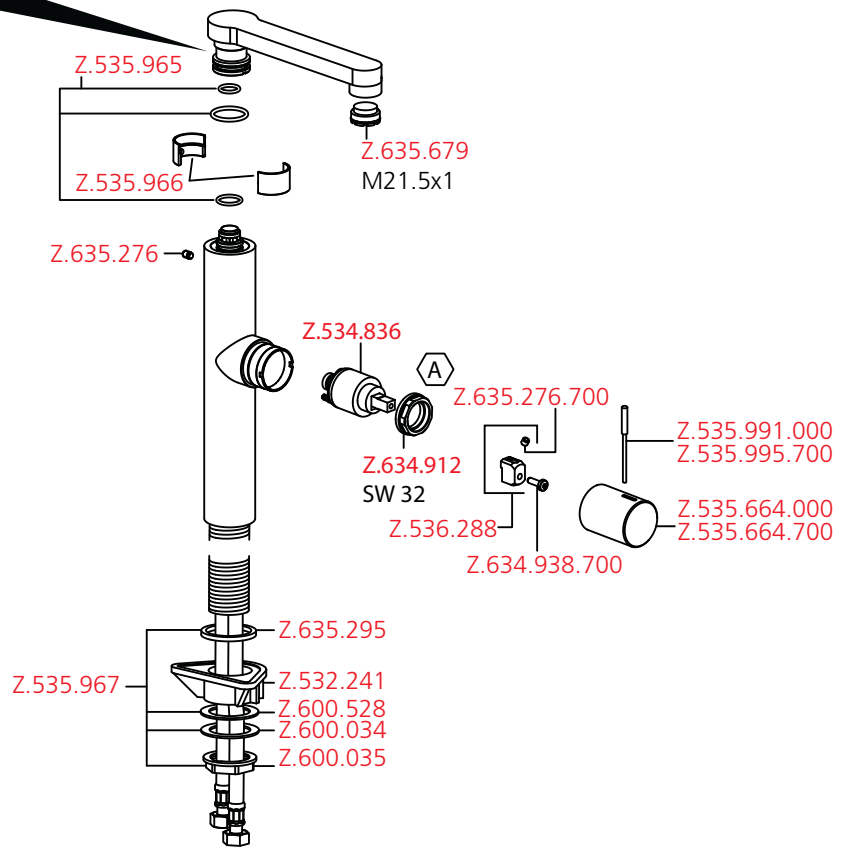
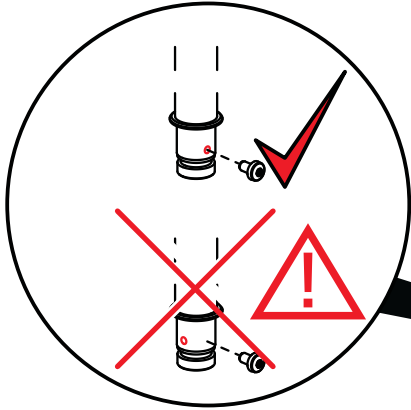
Z.635.392

A  
B  
C  
D  
32  
36  
14

Ersatzteile  
Pièces de rechange  
Pezzi di ricambio  
Repuestos  
Spare parts

10.151.413.000

10.151.413.700



M24x1  
Z.635.231

M21.5x1  
Z.635.215

USA/CAN:

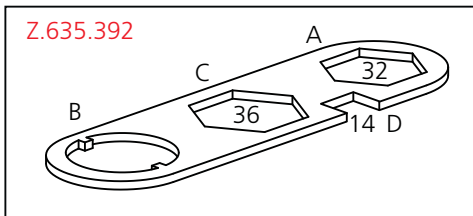
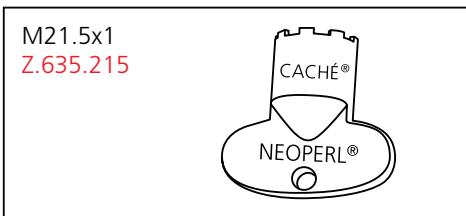
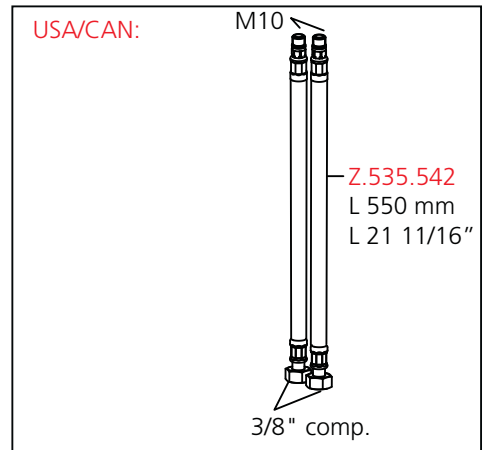
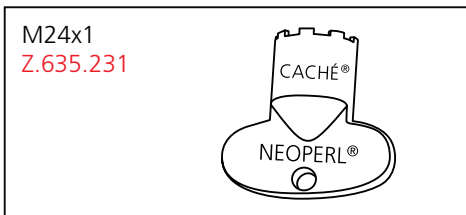
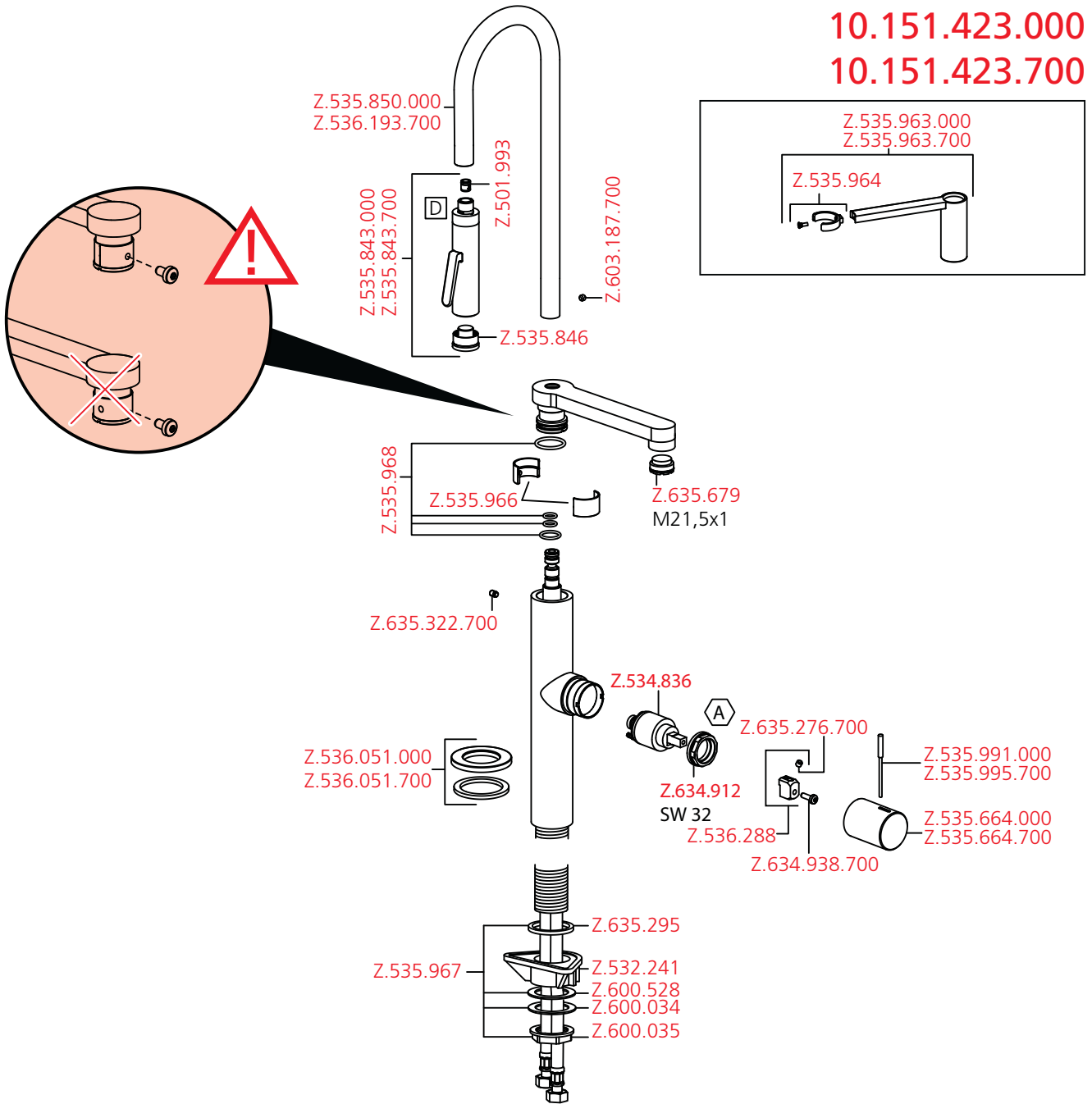
M10

Z.535.542  
L 550 mm  
L 21 11/16"

3/8" comp.

Z.635.392

10.151.423.000  
10.151.423.700



## Pflegeanleitung für Armaturen und Zubehör

### Instruction pour la maintenance des robinets et des accessoires

### Istruzioni per la manutenzione di rubinetti e accessori

### Instrucciones para el cuidado de griferias y accesorios

### Maintenance / Cleaning instructions for faucets and accessories

#### Grundsätzliche Reinigungshinweise:

- Beim Reinigen muss die Oberfläche der Armatur kalt sein (Wärme beschleunigt die Zerstörung der Oberfläche)!
- Reinigungshinweise der Reinigungsmittelhersteller beachten!

#### Die Pflege:

- Armatur täglich mit weichem Lappen trocken reiben!
- Scheuernde Reinigungsmittel und Putzschwämme unbedingt vermeiden!

#### Die Reinigung:

- Schmutz- oder Kalkflecken auf der Armaturenoberfläche nur mit mildem Reinigungsmittel entfernen!
- Sofort nach dem Reinigen alle Reinigungsmittelrückstände mit kaltem Wasser wegspülen!
- Mit weichem Lappen trocken reiben.

#### Instructions principales pour le nettoyage:

- Durant le nettoyage, la surface du robinet doit être froide (la chaleur accélère l'usure de la surface)!
- Nous vous prions de faire attention aux indications mentionnées sur les nettoyages!
- Assurez vous que les produits ne contiennent pas d'acides ou des substances corrosives.

#### L'entretien:

- Le robinet doit être nettoyé chaque jour avec un chiffon mou.
- Evitez absolument l'usage des brillants pour métaux, éponges abrasives ou produits similaires!

#### Le nettoyage:

- Enlevez salissures et dépôts calcaires de la surface du robinet seulement avec des produits qui ne sont pas agressifs!
- Immédiatement après le nettoyage, rincer bien les résidus des détergents avec de l'eau froid!
- Sécher avec un chiffon mou.

#### Principali istruzioni per la pulizia:

- Durante la pulizia, la superficie del rubinetto deve essere fredda (il calore accelera il logorio della superficie)!
- Fare attenzione alle indicazioni riportate sui prodotti per la pulizia!
- Accertarsi che non contengano acidi o sostanze corrosive.

#### La manutenzione:

- Il rubinetto deve essere asciugato quotidianamente con un panno morbido.
- Evitare assolutamente paglietta, spugne abrasive o similari!

#### La pulizia:

- Togliere sporco e calcare dalla superficie del rubinetto solo con detersivi non aggressivi!
- Subito dopo la pulizia, sciacquare bene i residui di detersivo con acqua fredda!
- Asciugare con un panno morbido.

#### Avisos básicos de limpieza:

- Cuando se procede a limpiar la griferia, su superficie debe estar fría (el calor acelera la destrucción de la superficie)!
- Respetar los avisos de limpieza del fabricante del detergente!

#### Cuidado:

- Secar la griferia frotando diariamente con un paño blando!
- Evite, imprescindiblemente, detergentes y esponjas de limpieza raspantes!

#### Limpieza:

- Quitar las manchas de suciedad o cal en la superficie de la griferia sólo con un detergente poco agresivo!
- Inmediatamente después de la limpieza eliminar, enjuagando con agua fría, todos los residuos del detergente!
- Secar frotando con un paño blando.

#### In General:

- Faucet surface must be of room temperature before cleaning (elevated temperature increases damage of the surface).
- Cleaning instructions of the detergent manufacturer must be followed.

#### Maintenance:

- Rub the faucet daily dry with a soft cloth.
- Never use corrosive cleaners or cleaning pads.

#### Cleaning:

- Dirt or calcareous deposits on the faucet surface must be removed with soft detergent or with soap water!
- Rinse well with water immediately after cleaning (make sure that no detergent remains on the surface)
- Dry with soft cloth.



- D Schäden, die infolge unsachgemässer Behandlung, natürlicher Abnutzung oder zu grosser Inanspruchnahme entstanden sind, sind von unseren Garantieleistungen ausgeschlossen!
- F Ces dommages survenus en raison d'un traitement inadéquat, des signes d'usure traitement inadéquat, naturels ou du grand utilisation, sont exclus de notre garantie.
- I Danni ai rubinetti, conseguenti da un trattamento non appropriato, sono esclusi dalla nostra garanzia!
- Sp Daños, debidos a un tratamiento inadecuado, son excluidos de la nuestra garantía.
- E Damages on the faucet resulting from incorrect handling are excluded from the manufacturers warranty!



Schweiz, Suisse:  
KWC AG  
Hauptstrasse 57  
5726 Unterkulm

Tel.: 062 768 68 68  
Fax: 062 768 61 62

USA:  
KWC AMERICA INC.  
1770 Corporate Drive #580 0  
US - Norcross, Georgia 30093

Phone 678 334 21 21  
Fax 678 334 21 28



Recyclingpapier auf 100% Altpapierbasis.  
Papier de recyclage sur 100% bases de vieux papier.  
Riciclaggio della carta sulla base della carta straccia di 100%.  
Reciclaje del documento sobre base del papel usado del 100%.  
Recycling paper on 100% waste paper basis.